

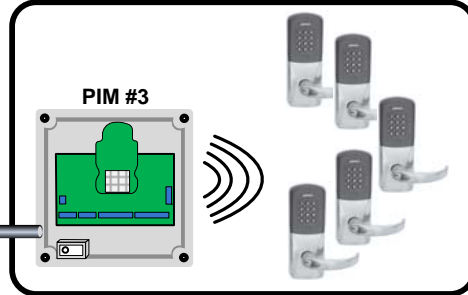
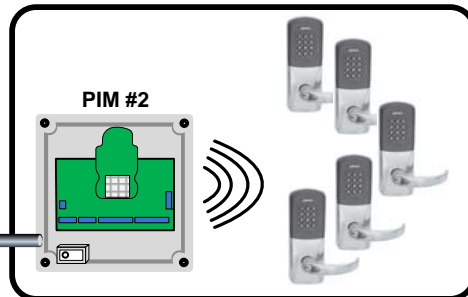
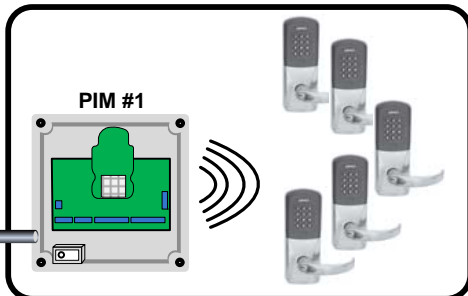
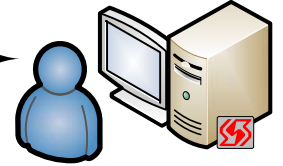
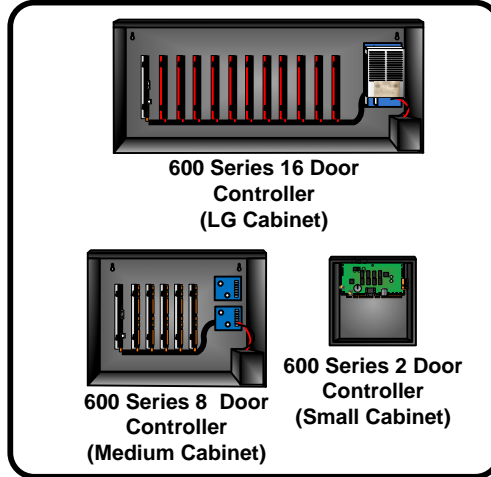
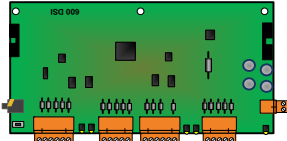
Galaxy Control Systems/ IR Wireless PIM 485 Interface

SYSTEM GALAXY HARDWARE

Uses Native TCP/IP Ethernet

SYSTEM GALAXY SOFTWARE

DSI-Serial Board
(2) RS-485 Channels
Up to (16) AD-400 Locks/Channel

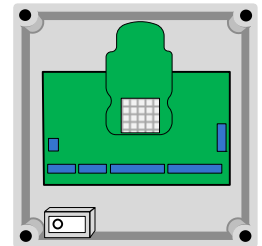


AD-400 Network Wireless Electronic Lock



- Self Contained w/ Card Reader Lock Contact REX
- Battery Pack

PIM400-485 Panel Interface Module



(1-16) AD-400 Locks/
485 Channel

!
Total # of AD-400 Locks not to exceed 32 per 600 CPU

To additional PIM's.
Up to 16 PIM's per 485 Channel
OR
16 Total AD-400's/
Wireless Device(s)

To additional PIM's.
Up to 16 PIM's per 485 Channel
OR
16 Total AD-400's/
Wireless Device(s)